

SOL
SALILA
CHERNG TALAY

POOL VILLA PHUKET
BY RIVA DEVELOPMENT

SALILA SOL



Computer generated imagery for advertising purposes only.

WELCOME TO SALILA SOL - A PRIVATE SANCTUARY WHERE CONTEMPORARY ELEGANCE MEETS THE SOUL OF THAI LIVING, SET IN THE HEART OF PHUKET.

THIS EXCLUSIVE COLLECTION OF JUST FIVE PRIVATE POOL VILLAS IS THOUGHTFULLY DESIGNED TO REFLECT SALILA - THE GENTLE PLAY OF LIGHT ON WATER - CREATING SPACES THAT FEEL BRIGHT, SERENE, AND TIMELESS.

EACH VILLA IS CRAFTED AS A PERSONAL RETREAT, WITH ALL AREAS ARE CONNECTED EASILY ACCESS TO INTERNAL POOL VIEWS. THE MASTER SUITE STANDS APART AS A SANCTUARY WITHIN A SANCTUARY, COMPLETE WITH A PRIVATE LIVING AREA FOR MOMENTS OF TRUE RELAXATION.

SALILA SOL IS MORE THAN A HOME - IT IS A PLACE WHERE EVERY DAY UNFOLDS IN CALM, BEAUTY, AND UNDERSTATED LUXURY.

*Information and visuals are for promotional purposes only. The developer may change details without prior notice.

PROJECT CONCEPT

SALILA SOL EMBODIES REFINED LUXURY LIVING FOR THOSE WHO VALUE PRIVACY, PRIME LOCATION, AND AN INTERNATIONAL FAMILY LIFESTYLE.

DESIGNED AS A SEAMLESS BLEND OF MODERN SOPHISTICATION AND RICH THAI CONTEMPORARY STYLE, EACH VILLA OFFERS GENEROUS LIVING SPACES, A FULLY EQUIPPED KITCHEN, PRIVATE POOL, LANDSCAPED GARDEN, AND AN EXPANSIVE PANORAMIC LIVING-DINING AREA. PREMIUM MATERIALS AND METICULOUS FINISHES CREATE AN ATMOSPHERE OF UNDERSTATED ELEGANCE.

LOCATED IN CHERNGTALAY, SALILA SOL IS SURROUNDED BY PHUKET'S FINEST AMENITIES - LAGUNA PHUKET GOLF CLUB, BOAT AVENUE, BANG TAO BEACH, BLUE TREE - AND IS WITHIN CLOSE PROXIMITY TO LEADING INTERNATIONAL SCHOOLS, MAKING IT AN IDEAL HOME FOR GLOBAL FAMILIES SEEKING BOTH QUALITY EDUCATION AND LIFESTYLE CONVENIENCE. EASY ACCESS TO PHUKET INTERNATIONAL AIRPORT FURTHER ENHANCES ITS INTERNATIONAL APPEAL.

WITH ONLY FIVE EXCLUSIVE VILLAS, SALILA SOL IS A RARE OPPORTUNITY TO OWN A PRIVATE SANCTUARY IN ONE OF PHUKET'S MOST SOUGHT-AFTER LOCATIONS.





PROJECT INFORMATION

PROJECT NAME :	SALILA SOL
DEVELOPER :	RIVA DEVELOPMENT
TOTAL LAND AREA :	2,817.2 SQ.M.
NUMBER OF UNIT :	5 UNITS
TITLE :	FREEHOLD / LEASEHOLD
VILLA TYPE :	4-5 BEDROOMS POOL VILLA
PLOT SIZE :	454.6 - 588.8 SQ.M.
PROJECT PERIOD :	2024 - 2026



PLOT
H-05

PLOT
H-04

PLOT
H-03

PLOT
H-02

PLOT
H-01



PLOT INFORMATION

PLOT	TYPE	BEDROOMS	PLOTSIZE (SQ.M)	BUILT-UP AREA (SQ.M)	POOL SIZE (M)
H-01	A	4 BEDROOMS	454.6	500 SQ.M	4 X 10
H-02	A	4 BEDROOMS	456.4	500 SQ.M	4 X 10
H-03	A	4 BEDROOMS	458.4	500 SQ.M	4 X 10
H-04	A	4 BEDROOMS	460.4	500 SQ.M	4 X 10
H-05	B	5 BEDROOMS	588.8	594 SQ.M	4 X 10

*Information and visuals are for promotional purposes only. The developer may change details without prior notice.

PROJECT MASTER PLAN



PLOT SIZE :
454.6-588.8 SQ.M

*Information and visuals are for promotional purposes only. The developer may change details without prior notice.



NORTH



VILLA TYPES



SOL
SALILA
CHERNG TALAY



TYPE A



SOL

SALILA

CHERNG TALAY



Information and visuals are for promotional purposes only. The developer may change details without prior notice.

Computer generated imagery for advertising purposes only.

1ST FLOOR



SOL
SALILA
CHERNG TALAY

 **BEDROOM**

 **LAUNDRY AREA**

 **MAIDROOM**

 **POWDER ROOM**

 **DOUBLE VOLUME
COMMON AREA**

 **SWIMMING POOL**

POOL VILLA PHUKET
BY RIVA DEVELOPMENT

*Information and visuals are for promotional purposes only. The developer may change details without prior notice.

2ND FLOOR



SOL
SALILA
CHERNG TALAY

 BATHROOM

 WALK - IN CLOSET

 BATHROOM

 BEDROOM

 MULTI-FUNCTION AREA

 MASTER PRIVATE LIVING ROOM

 MASTER BEDROOM

 MASTER PRIVATE LIVING BALCONY

POOL VILLA PHUKET
BY RIVA DEVELOPMENT

*Information and visuals are for promotional purposes only. The developer may change details without prior notice.

TYPE A

LAY OUT PLAN

1ST FLOOR



2ND FLOOR



BUILT-UP AREA

500 SQ.M

(INCLUDE POOL + BALCONY + CAR PARK)

- 4 BEDROOMS
- 4 BATHROOMS
- 1 POWDER ROOM
- MULTI FUNCTION AREA
- PANORAMA POOL VIEW COMMON AREA
- 2 CARPARKS
- SPACIOUS POOL BALCONY: 52 SQ.M.
- SWIMMING POOL 4 X 10 M.
- MAID ROOM
- LAUNDRY AREA



SOL
SALILA
CHERNG TALAY

TYPE B

*Information and visuals are for promotional purposes only. The developer may change details without prior notice.



SOL
SALILA
CHERNG TALAY



TYPE B

*Information and visuals are for promotional purposes only. The developer may change details without prior notice.

1ST FLOOR



SOL
SALILA
CHERNG TALAY



POOL VILLA PHUKET
BY RIVA DEVELOPMENT

*Information and visuals are for promotional purposes only. The developer may change details without prior notice.

2ND FLOOR



SOL
SALILA
CHERNG TALAY



 MASTER BEDROOM

 WALK - IN CLOSET

 BATHROOM

 BEDROOM

 BEDROOM

 BEDROOM

 SPACIOUS
POOL BALCONY

POOL VILLA PHUKET
BY RIVA DEVELOPMENT

*Information and visuals are for promotional purposes only. The developer may change details without prior notice.

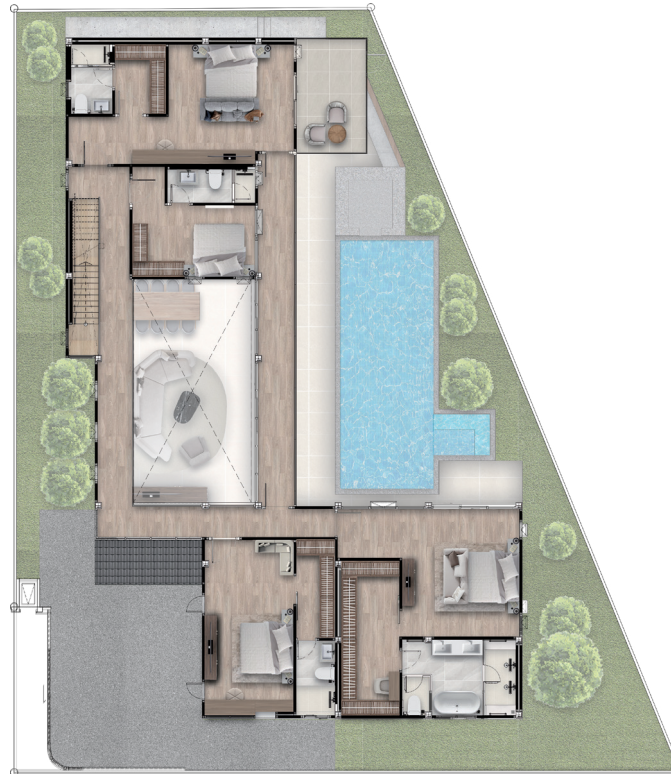
TYPE B

LAY OUT PLAN

1ST FLOOR



2ND FLOOR



BUILT-UP AREA

594 SQ.M

(INCLUDE POOL + BALCONY + CAR PARK)

- 5 BEDROOMS
- 5 BATHROOMS
- 1 POWDER ROOM
- PANORAMA POOL VIEW COMMON AREA
- 2 - 4 CARPARKS
- SPACIOUS POOL BALCONY
- SWIMMING POOL 4 X 10 M.
- MAID ROOM
- LAUNDRY AREA



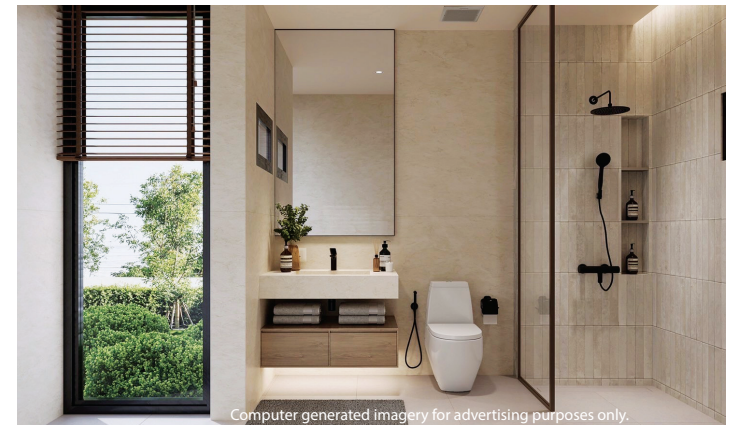
Computer generated imagery for advertising purposes only.



Computer generated imagery for advertising purposes only.



Computer generated imagery for advertising purposes only.



Computer generated imagery for advertising purposes only.



Computer generated imagery for advertising purposes only.



Computer generated imagery for advertising purposes only.



Computer generated imagery for advertising purposes only.

*Information and visuals are for promotional purposes only. The developer may change details without prior notice.

LOCATION

SALILA SOI CHERNG TALAY

INTERNATIONAL SCHOOL

- HEADSTART CHERNG-TALAY INTERNATIONAL SCHOOL (2 KM.)
- BRITISH INTERNATIONAL SCHOOL PHUKET (8.6 KM.)
- UWC THAILAND INTERNATIONAL SCHOOL (7.5 KM.)

NEARBY BEACHES

- BANGTAO BEACH (0.9 KM.)
- LAGUNA BEACH (1.2 KM.)
- PANSEA BEACH (3.4 KM.)
- SURIN BEACH (3.7 KM.)

NEARBY GOLF COURSE

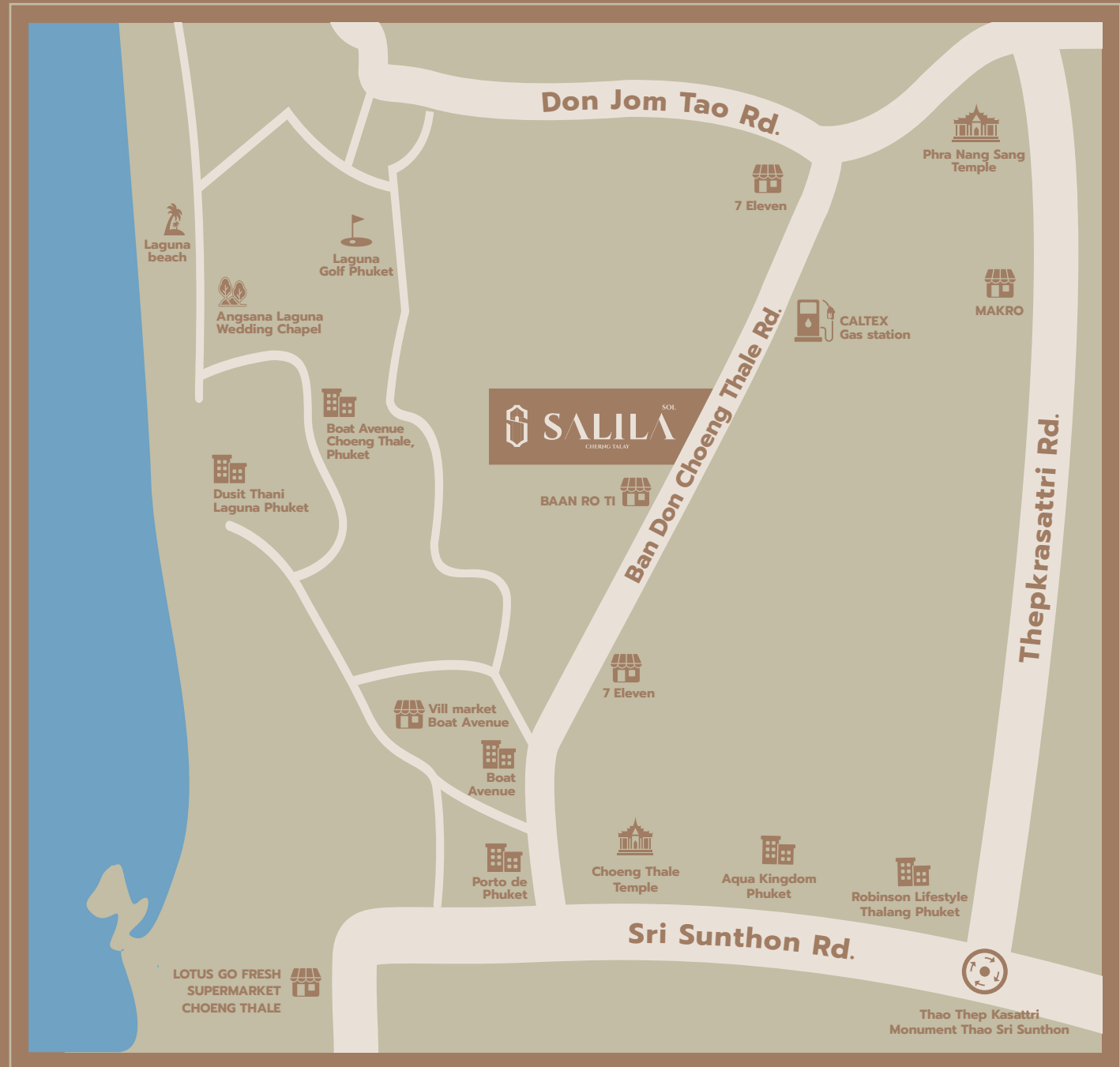
- LAGUNA GOLF PHUKET (1.4 KM.)
- RED MOUNTAIN GOLF CLUB PHUKET (9.5 KM.)
- LOCH PALM GOLF CLUB (9.6 KM.)
- PHUKET COUNTRY CLUB GOLF (11.8 KM.)

NEARBY HOSPITAL

- THALANG HOSPITAL (4.9 KM.)
- PATONG HOSPITAL (11.5 KM.)
- BANGKOK INTERNATIONAL HOSPITAL (13.5 KM.)
- BANGKOK HOSPITAL SIRIROJ (13.6 KM.)

NEARBY COMMUNITY MALL

- PORTO DE PHUKET (900 M.)
- BOAT AVENUE (700 M.)
- VILLA MARKET - BOAT AVENUE PHUKET (LAGUNA) (800 M.)
- BANG TAO NIGHT MARKET (2 KM.)
- CENTRAL PHUKET FLORESTA (20.4 KM.)





SALILA^{SOL}

CHERNG TALAY



SALILAVILLA

BAN DON-CHOENG THALE, CHOENG THALE SUBDISTRICT,
THALANG DISTRICT, PHUKET 83110